

Austape®

# Circuitboard (PCB) Plating Polyester Tape

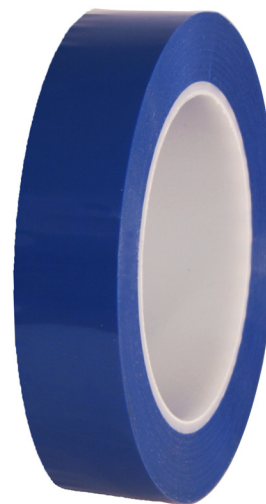
A3503

## TYPICAL APPLICATIONS

- Designed for use in printed circuitboard plating applications to protect circuitboards during tin/lead stripping and gold finger plating operations
- Also suited to a variety of other holding, splicing and masking applications, for example splicing silicone-coated paper in the graphic arts industry

## FEATURES & BENEFITS

- 1 mil polyester film combined with 2 mils specially formulated silicone adhesive
- Good chemical and temperature resistance
- Thick, conformable adhesive prevents leakage from stripping and plating chemicals
- Polyester backing is resistant to puncture
- Good dielectric strength



## CONSTRUCTION

Backing: PET polyester film

Adhesive: Silicone

## COLOUR/S

- Dark Blue

## STANDARD LENGTH/S

- 66 m

## STANDARD WIDTH/S

- 24 mm
- 48 mm

## TYPICAL PHYSICAL PROPERTIES

Product	A3503	
Tensile Strength	42 N/10mm	24 lbs/in width
Adhesion (to Stainless Steel)	3.28 N/10mm	30 oz/in width
Elongation	100 %	
Total Tape Thickness	0.075 mm	3.0 mils
Backing Thickness	0.025 mm	1.0 mils
Operating Temperature Range	-73 to 177 °C	-100 to 350 °F
Insulation Class	Class B / 130 °C	
Dielectric Strength	5.5 kV	

Contact your Insulect sales representative or distributor for information on non-standard sizes

“Austape” is a registered trademark of Insulect Australia Pty Ltd

## STORAGE & USAGE CONDITIONS

This tape should be stored in a cool, dry area away from direct sunlight and should be applied to surfaces which are clean, dry and free from grease, oil or other contaminants.

## TECHNICAL INFORMATION

The physical and performance characteristics shown in this document are based on testing done by or on behalf of the manufacturer and do not represent a guarantee of product performance. Individual rolls may vary slightly from these averages. The user is responsible for determining whether the product is fit for a particular purpose and suitable for the user's method of application before use.